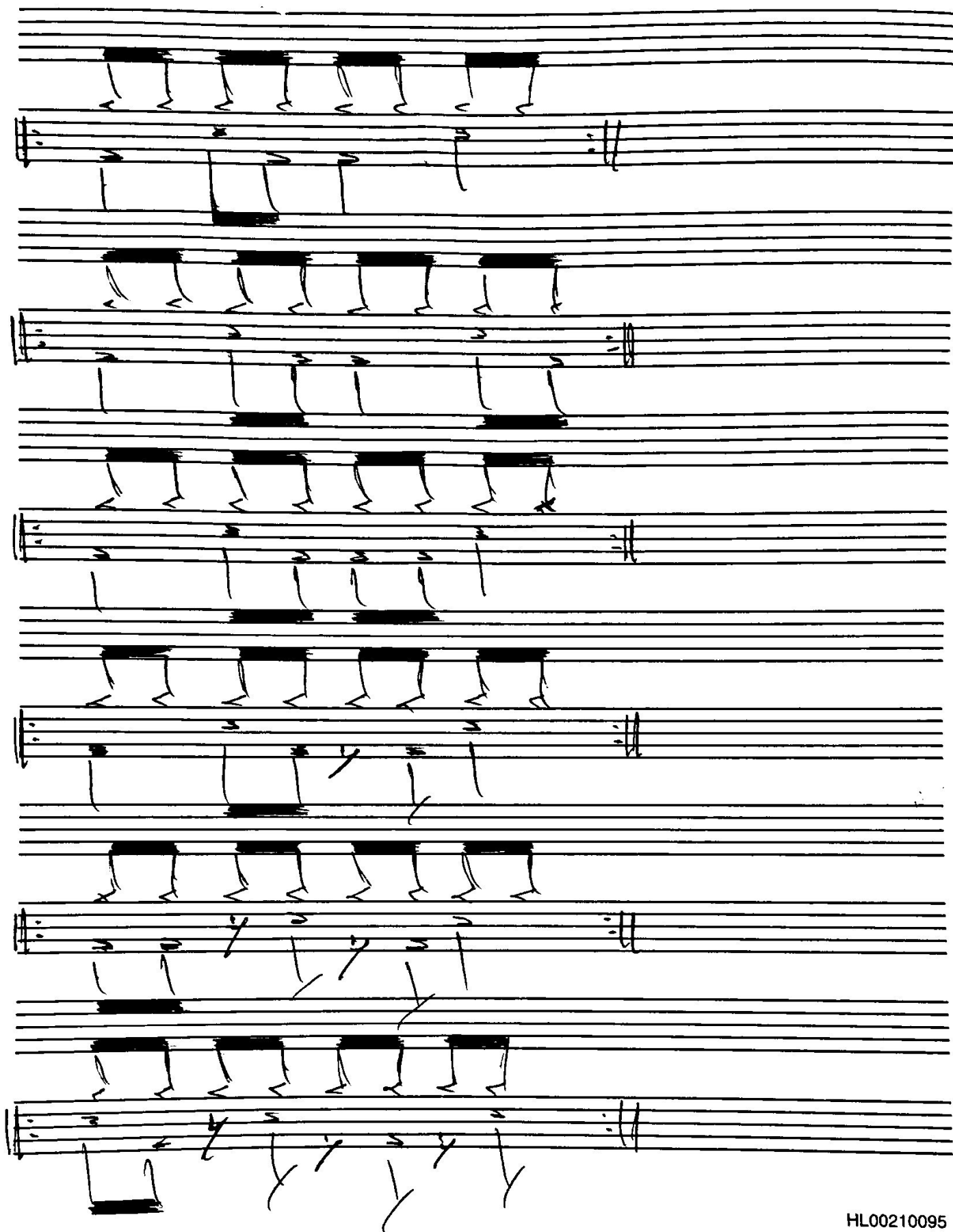


. GROOVES:

✓ = HI-HAT  
# = REVERBANTE  
□ = BOMBO

The image displays a series of ten hand-drawn musical staves, each representing a different drum groove. The notation is written in black ink on white paper. The first staff is marked with circled numbers 1 through 4, indicating specific measures. The notation uses various symbols to represent different drum parts: checkmarks (✓) for Hi-Hat, hash marks (#) for Reverbante, and squares (□) for Bombo. The grooves are arranged in a vertical sequence, with each staff showing a unique rhythmic pattern. The notation is simple and appears to be a personal or working draft.



HL00210095

. DIFERENTES FORMAS DE ACOMPAÑAR CON EL HI-  
HAT TOCADO CON EL PIE:

The image displays three handwritten musical staves, each representing a different hi-hat accompaniment pattern. Each staff begins with a boxed letter label: 'A' for the first, 'B' for the second, and 'C' for the third. The notation is written on a five-line staff with a key signature of one sharp (F#) and a common time signature (C).  
Pattern A: The first staff shows a sequence of notes with stems and flags, followed by a double bar line and a repeat sign. The second part of the pattern consists of a series of eighth notes, each with a downward-pointing arrow indicating a foot stroke.  
Pattern B: The second staff shows a sequence of notes with stems and flags, followed by a double bar line and a repeat sign. The second part of the pattern consists of a series of eighth notes, each with a downward-pointing arrow indicating a foot stroke.  
Pattern C: The third staff shows a sequence of notes with stems and flags, followed by a double bar line and a repeat sign. The second part of the pattern consists of a series of eighth notes, each with a downward-pointing arrow indicating a foot stroke.