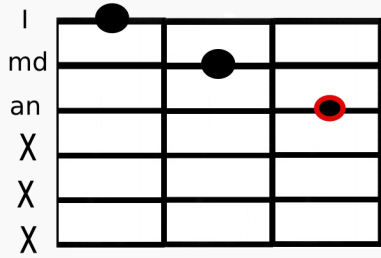
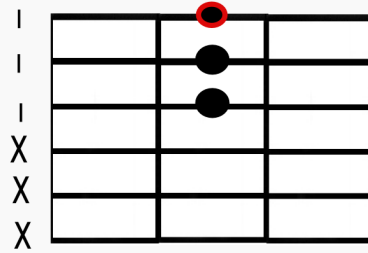


Triadas menores

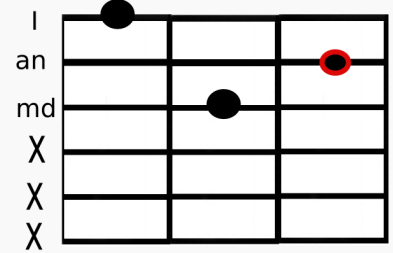
Posición fundamental



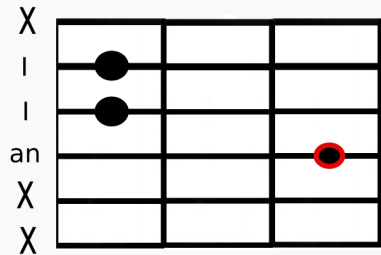
1º Inversión



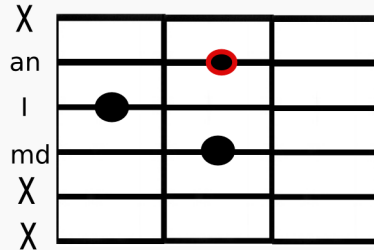
2º Inversión



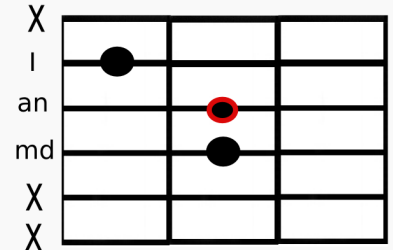
Posición fundamental



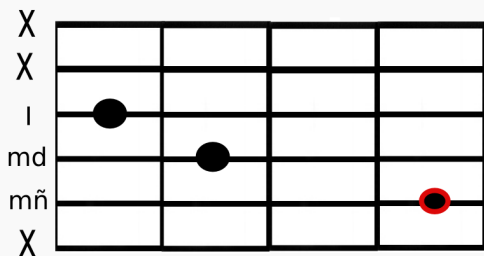
1º Inversión



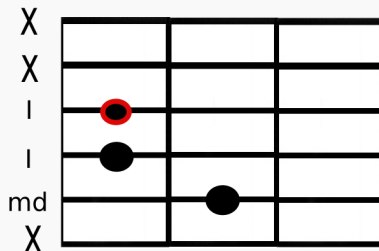
2º Inversión



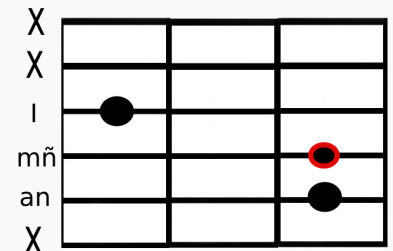
Posición fundamental



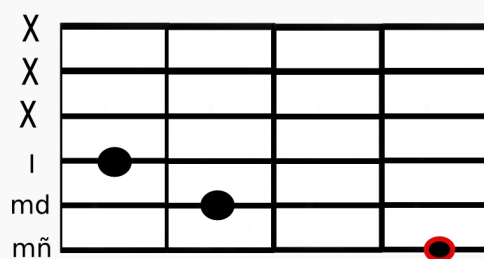
1º Inversión



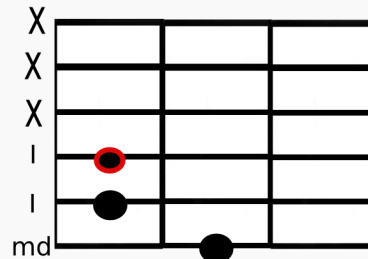
2º Inversión



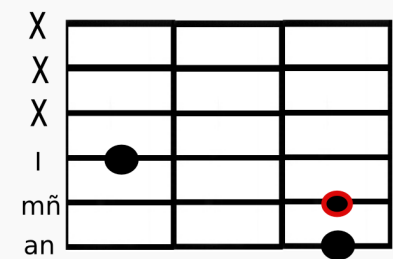
Posición fundamental



1º Inversión



2º Inversión



3

Cada letra representa el dedo de la mano izquierda que tocaría cada nota (I= Índice; md=Medio; an=Anular; mñ=Meñique).

- Tónica
- Nota del acorde
- Cuerda que no se toca