



Instituto Nacional de Investigación Agropecuaria  
U R U G U A Y

A vertical strip on the left side of the slide showing various life stages of the Citrus Psyllid (Diaphorina citri). From top to bottom, it includes: a cluster of small yellowish eggs; a single egg; a cluster of small, pale, oval-shaped nymphs; a cluster of slightly larger, pale nymphs; a single adult psyllid with a brown and white patterned body; a cluster of pale nymphs; a single pale nymph; a cluster of pale nymphs; a single pale nymph; and a cluster of small yellowish eggs.

# Reconocimiento y monitoreo de *Diaphorina citri*

Abril 2017

# Psílido Asiático de los Cítricos



# Adulto *Diaphorina citri*



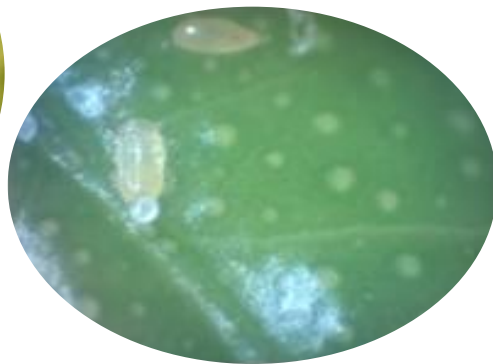


¿Donde buscar los adultos?











# Huevos





# Ninfa1



# Ninfa 2





# Ninfa 3





# Ninfa 4

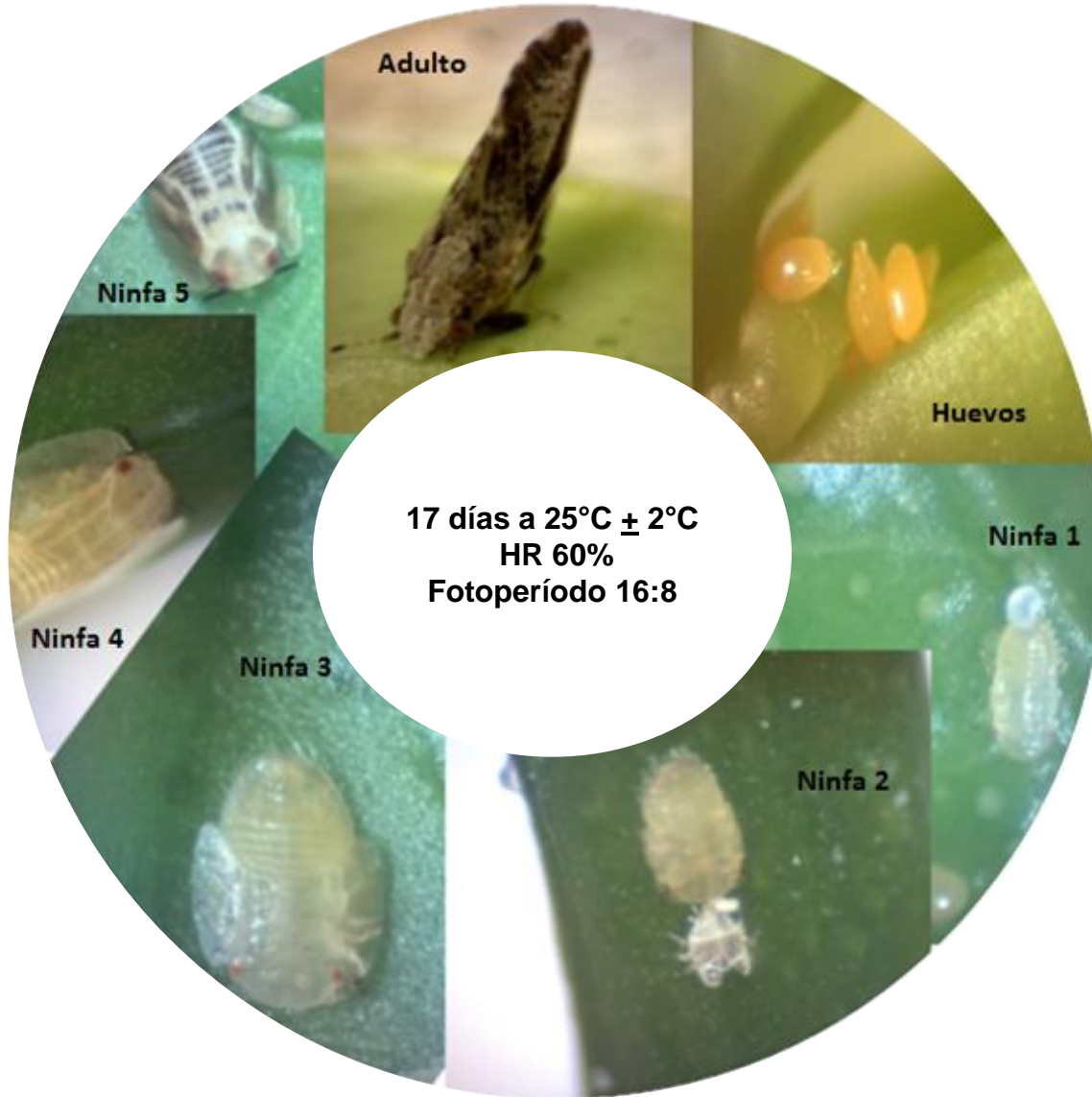


# Ninfa 5



# Ciclo biológico *Diaphorina citri*:

14,4 – 49,3 días (Tsai & Liu, 2000; Liu & Tsai, 2000)









Hembra



Macho





# Que es monitorear?



# Métodos de monitoreo



- Observación visual



- Golpeo o Tap



- Trampas amarillas















Muchas gracias!!!!



