

**TAXONOMIA DE LOS 5 GENEROS DE GARRAPATAS DIAGNOSTICADOS  
EN BOVINOS EN URUGUAY\***

Departamento de Parasitología – Dra. M. Angélica Solari – Dr. Ulises Cuore  
T. Ag. Alfredo Trelles - T. Agr. Gabriel Mautone

**Rostro**



Corto: *Boophilus microplus*  
*Rhipicephalus spp*  
*Haemaphysalis spp*



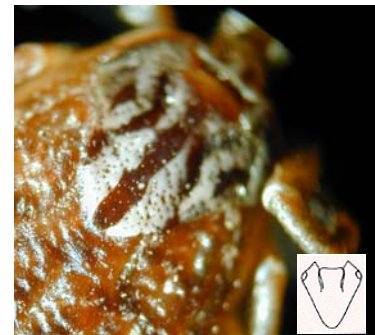
Largo: *Ixodes spp*  
*Amblyomma spp*



*Boophilus microplus*



*Ixodes spp*



*Amblyomma spp*



*Haemaphysalis spp*



*Rhipicephalus spp*

\* Presentado en jornadas "Aportes a la lucha contra la garrapata" (2006) F.A.O.-TCP URU 3003 A

## Ojos

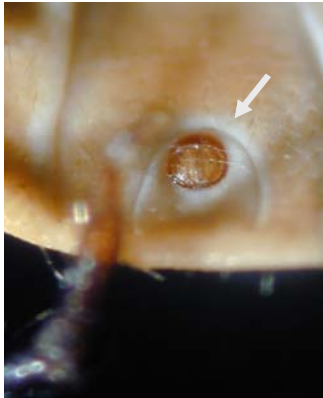


Presencia: *Boophilus microplus*  
*Amblyomma spp*  
*Rhipicephalus spp*

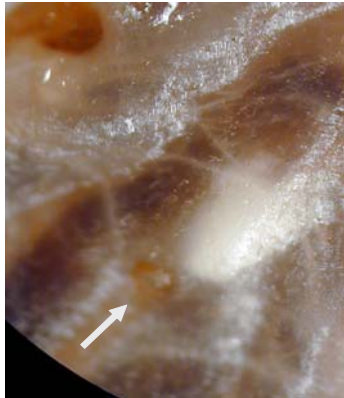


Ausencia: *Ixodes spp*  
*Haemaphysalis spp*

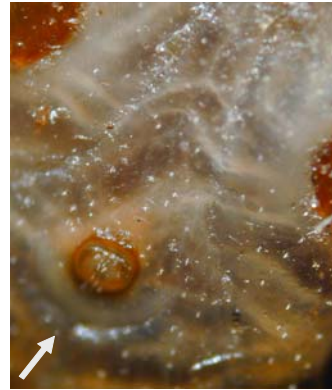
## Surco anal



Surco anal anterior *Ixodes spp*



Surco anal no muy evidente  
*Boophilus microplus*



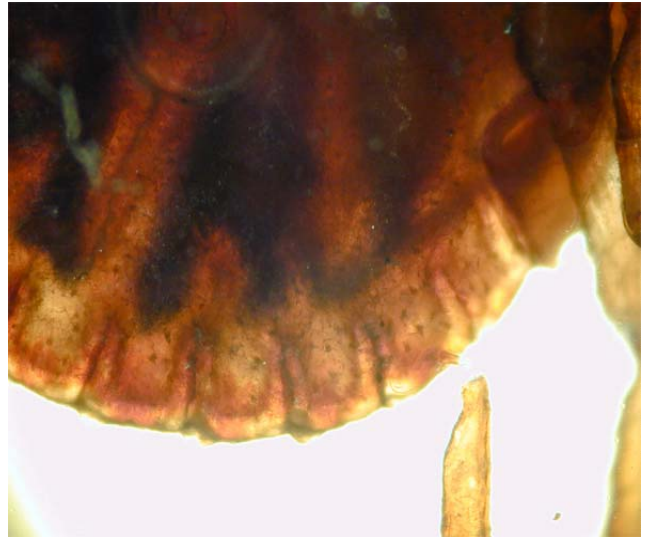
Surco anal posterior  
*Rhipicephalus spp*  
*Amblyomma spp*  
*Haemaphysalis spp*

## Festones



Ausencia de festones:

*Boophilus microplus*  
*Ixodes spp*



Presencia de festones: *Amblyomma spp*  
*Rhipicephalus spp*  
*Haemaphysalis spp*

## Coxa I



*Boophilus microplus*



*Rhipicephalus spp*



**Espiráculos**



*Rhipicephalus spp*

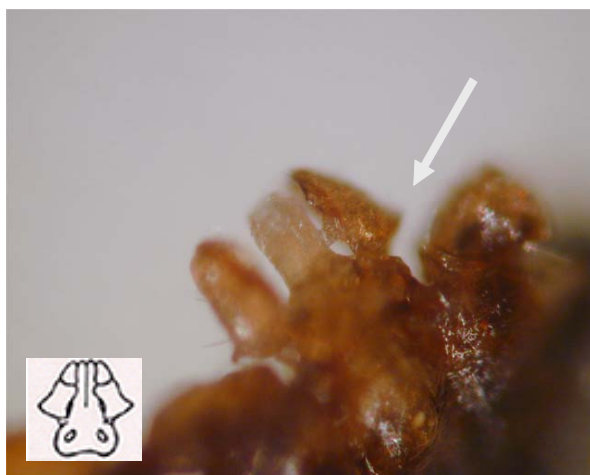


*Ixodes spp*

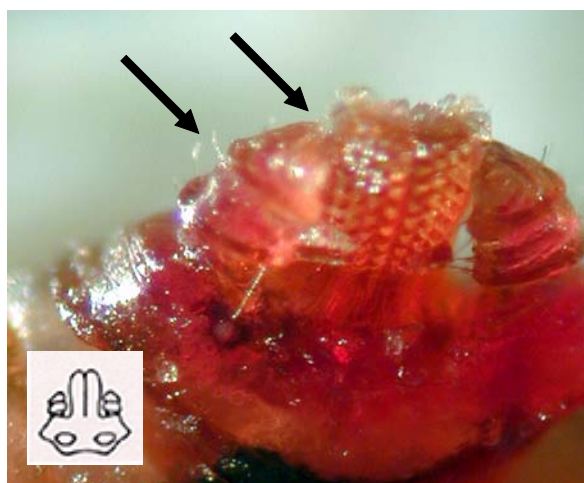


*Boophilus microplus*

**Palpos**



*Haemaphysalis spp*

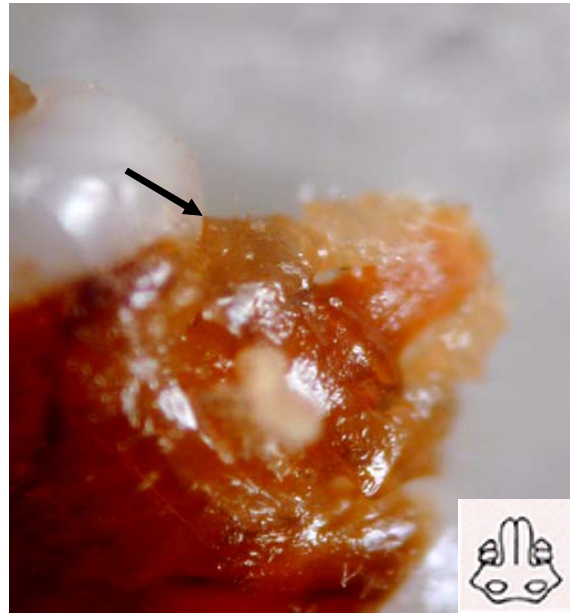


*Boophilus microplus*  
*Cortos y crestados*

## Base del capítulo

































*Rhipicephalus spp*



*Boophilus microplus*

## GUIA PRACTICA PARA IDENTIFICACION DE GENEROS

	ROSTRO	ESCUDO	OJOS	SURCO ANAL	FESTONES	COXA I	PLACAS ADANALES	ESPIRACULOS	ESCUDO ORNAMENTADO	TAMAÑO
Ixodes spp	 Largo		No	Ant.	 No	 Sin Nada	 2		No	Medio
Amblyomma spp	 Largo		Si	Post.	 Si	 Con Espinas	 No		Si	Grande
Boophilus spp	 Corto		Si	No muy obvio	 No	 Bifid.	 4		No	Medio
Haemaphysalis spp	 Corto		No	Post.	 Si	 Con espinas cortas	 No		No	Medio
Rhipicephalus spp	 Corto		Si	Post.	 Si	 Bifid.	 2		No	Medio