

Ministerio
de **Vivienda**
y **Ordenamiento Territorial**

JUNTOS
Plan de Integración
Socio-Habitacional



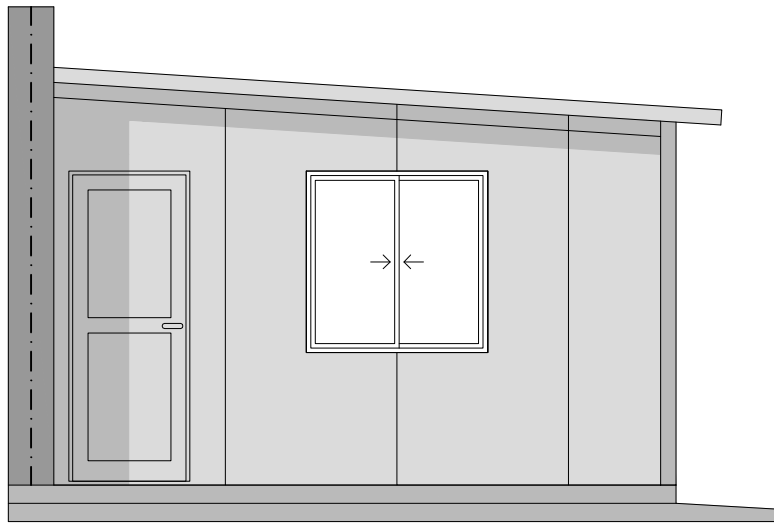
"Que los más infelices sean los más privilegiados" Gral. José Gervasio Artigas

UBICACIÓN **MELO - CERRO LARGO**
A.I. **ANSINA**
CONTENIDO **PLANTA DE UBICACIÓN**

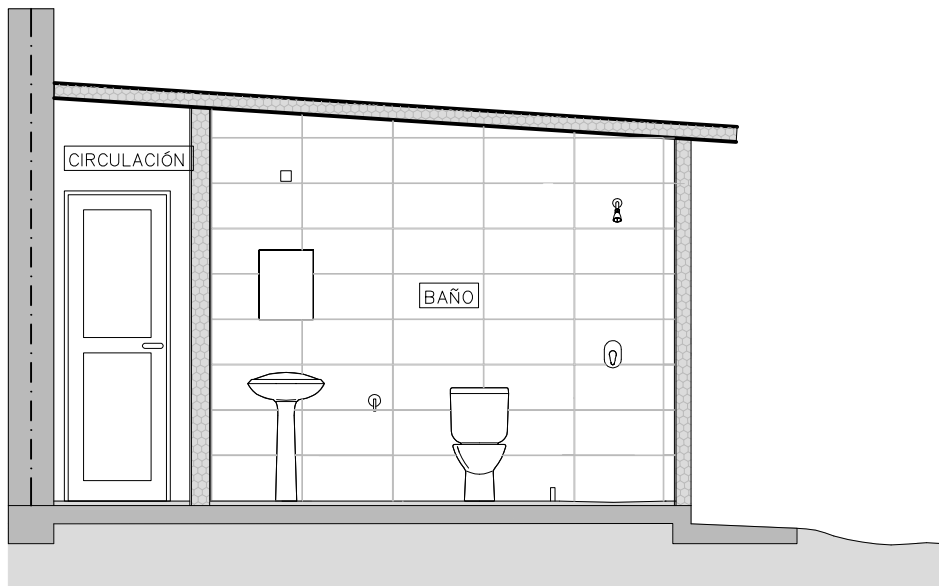
ESCALA **S/E**

FECHA **FEB. 2023**

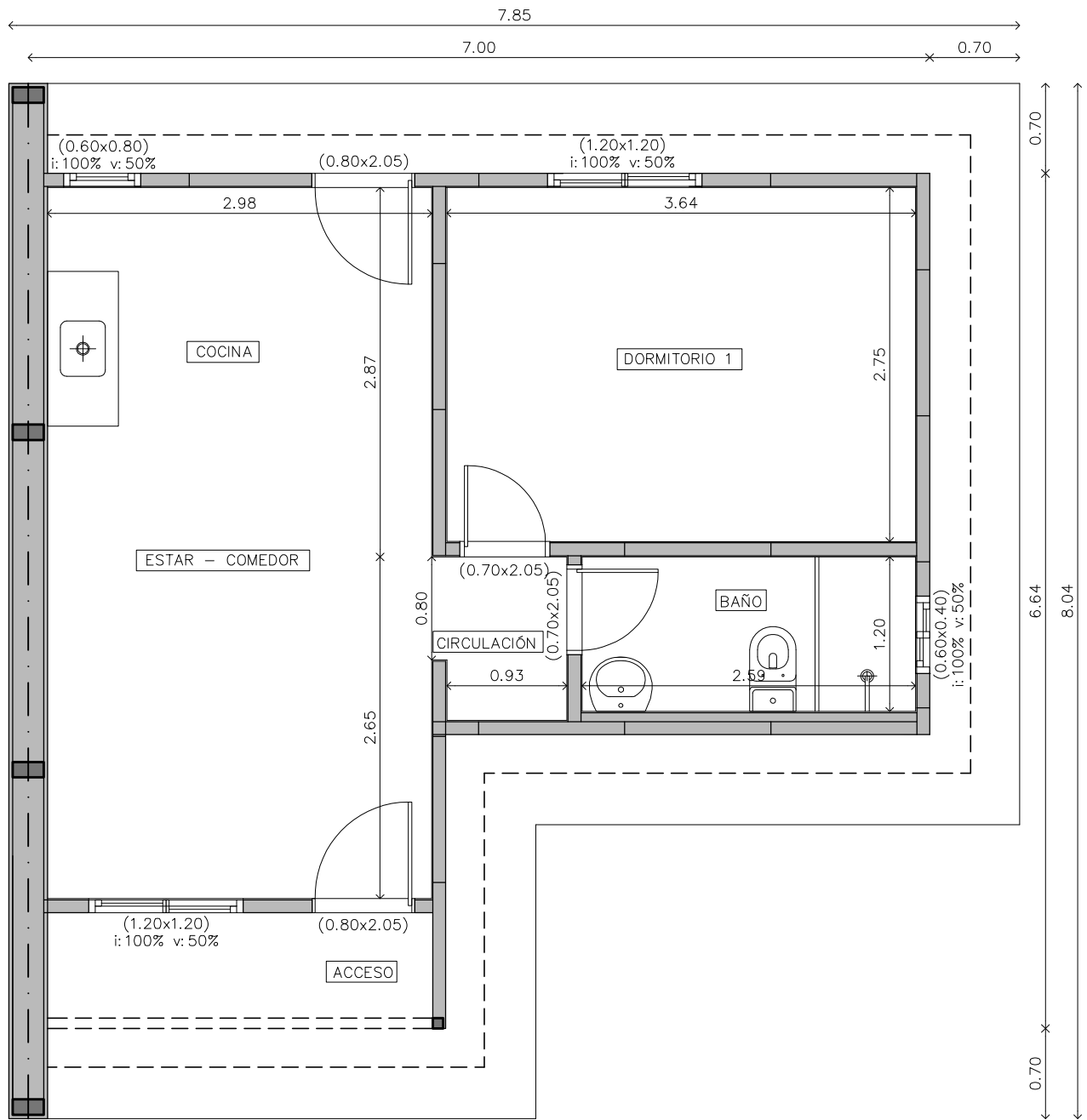
LÁMINA **A01**



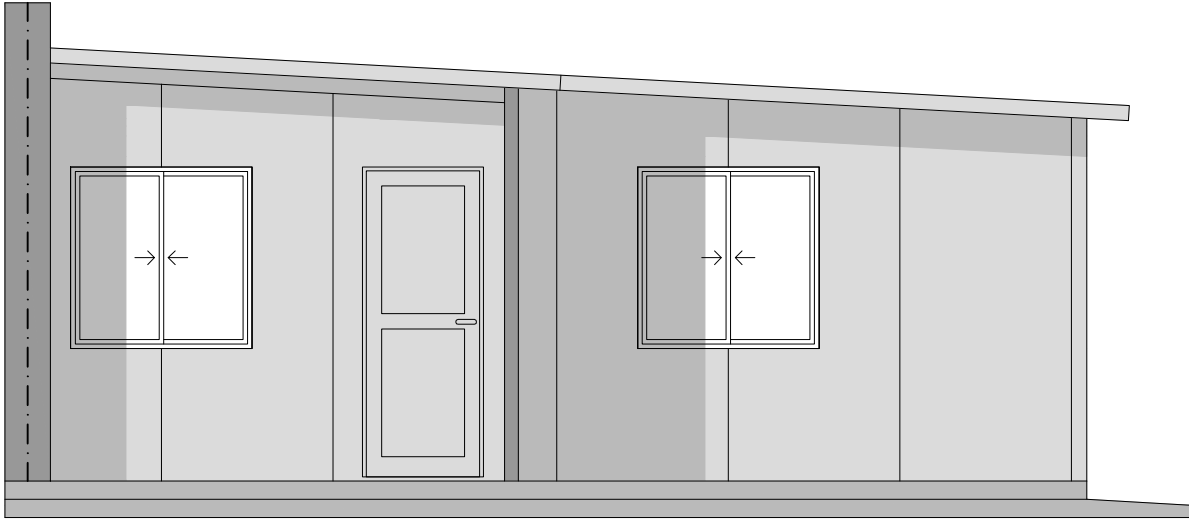
FACHADA PRINCIPAL
Esc. 1 / 50



CORTE LONGITUDINAL
Esc. 1 / 50



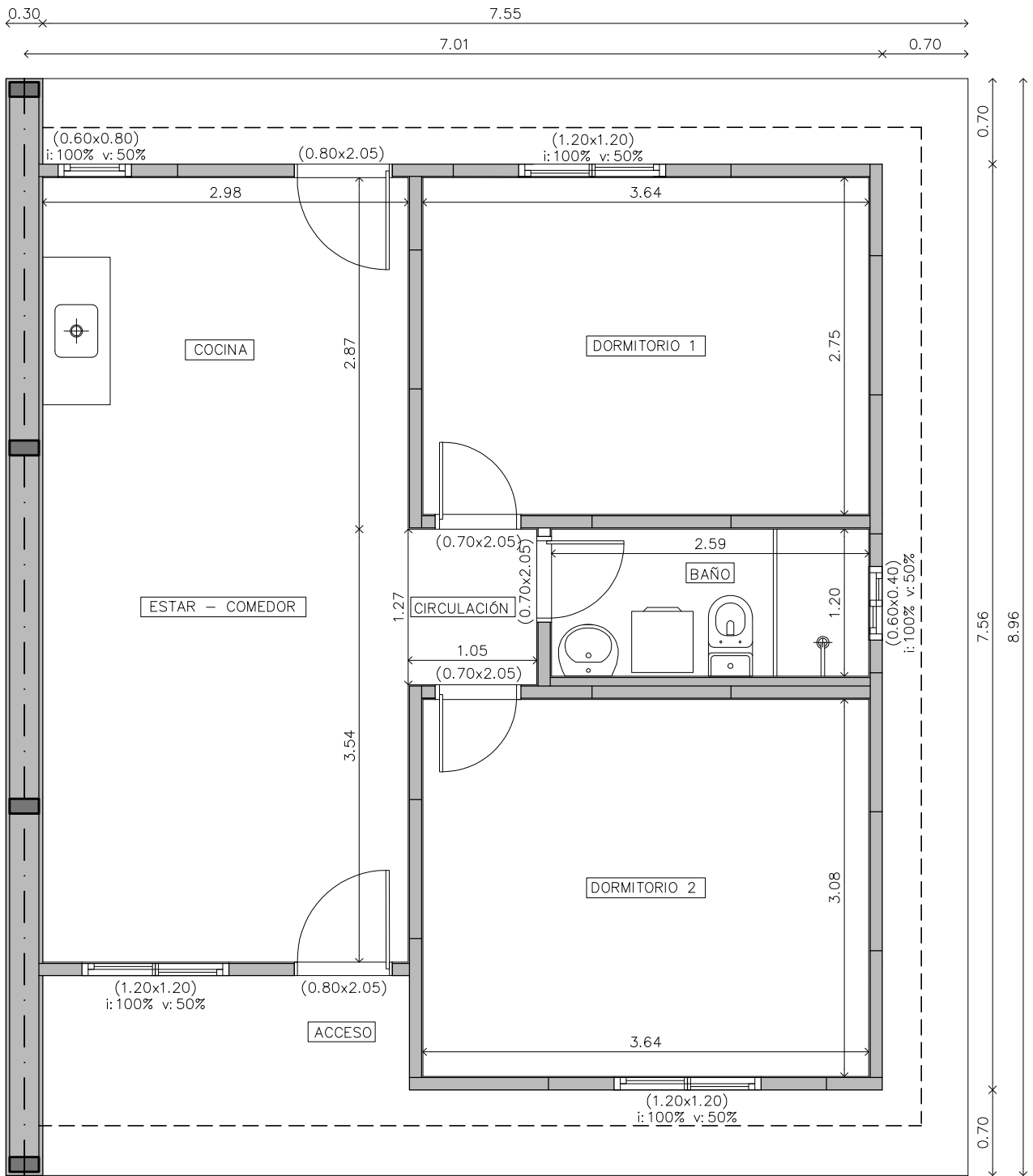
PLANTA ALBAÑILERÍA
Esc. 1 / 50



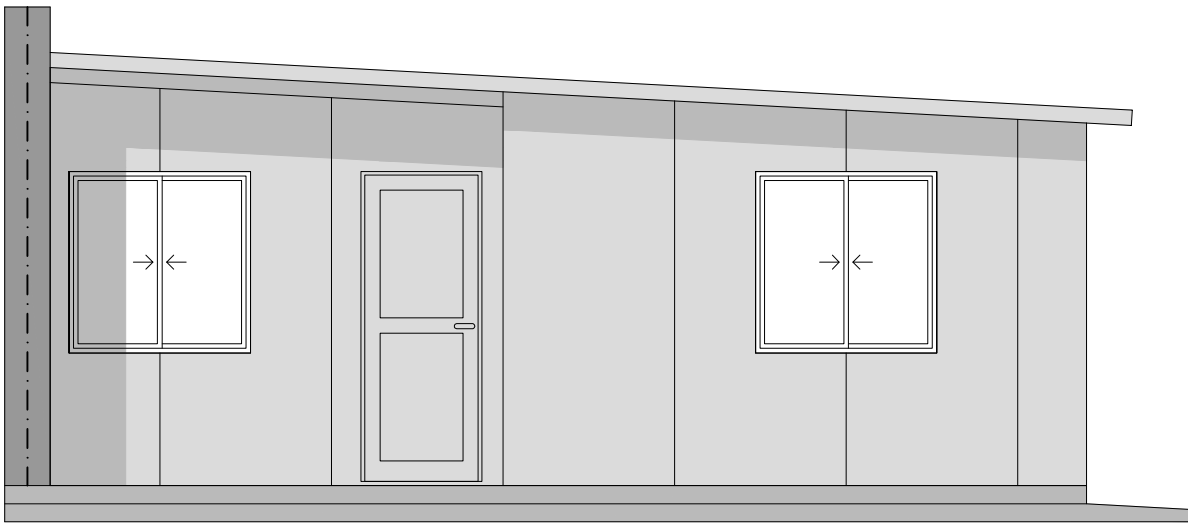
FACHADA PRINCIPAL
Esc. 1 / 50



CORTE LONGITUDINAL
Esc. 1 / 50



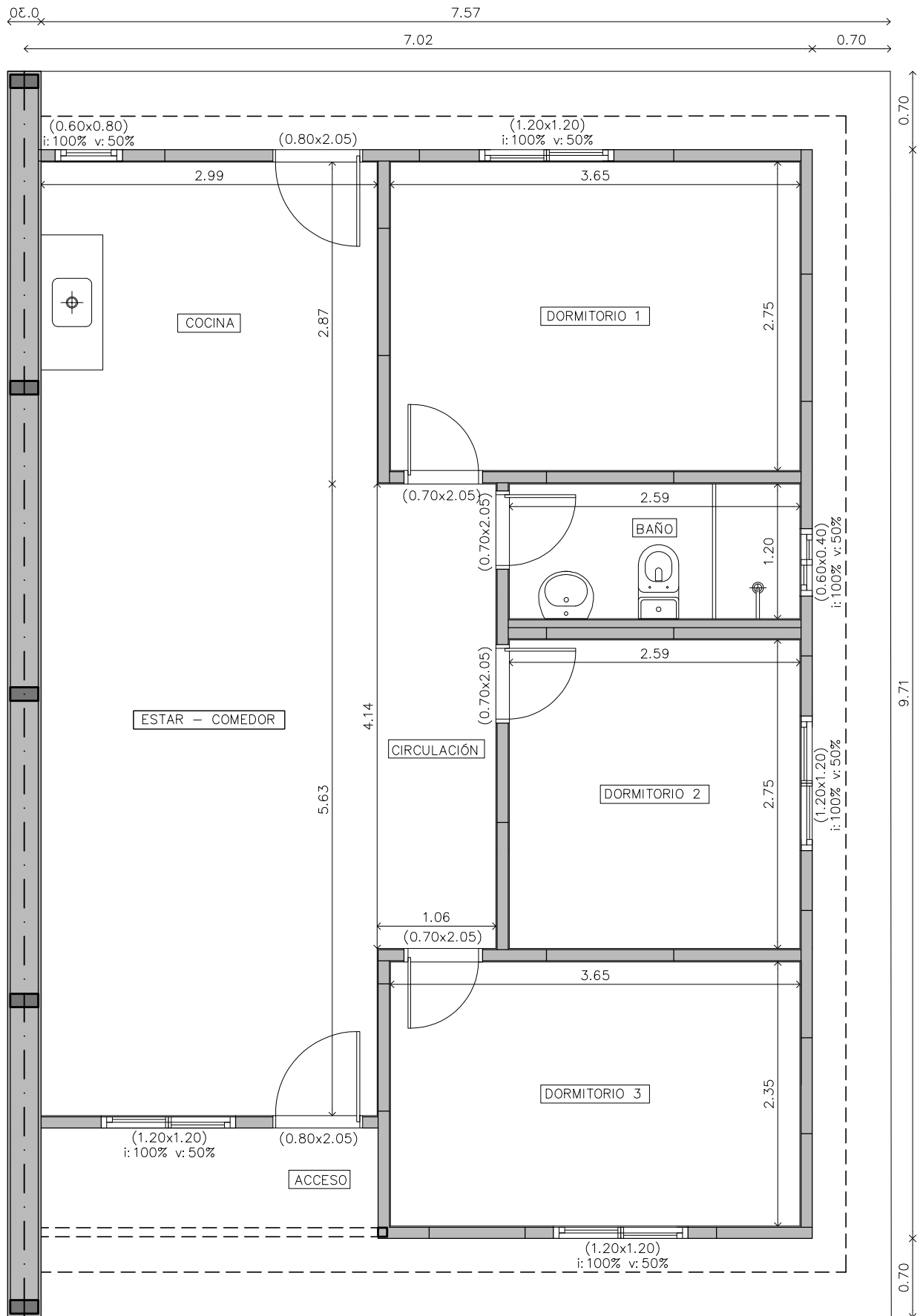
PLANTA ALBAÑILERÍA
Esc. 1 / 50



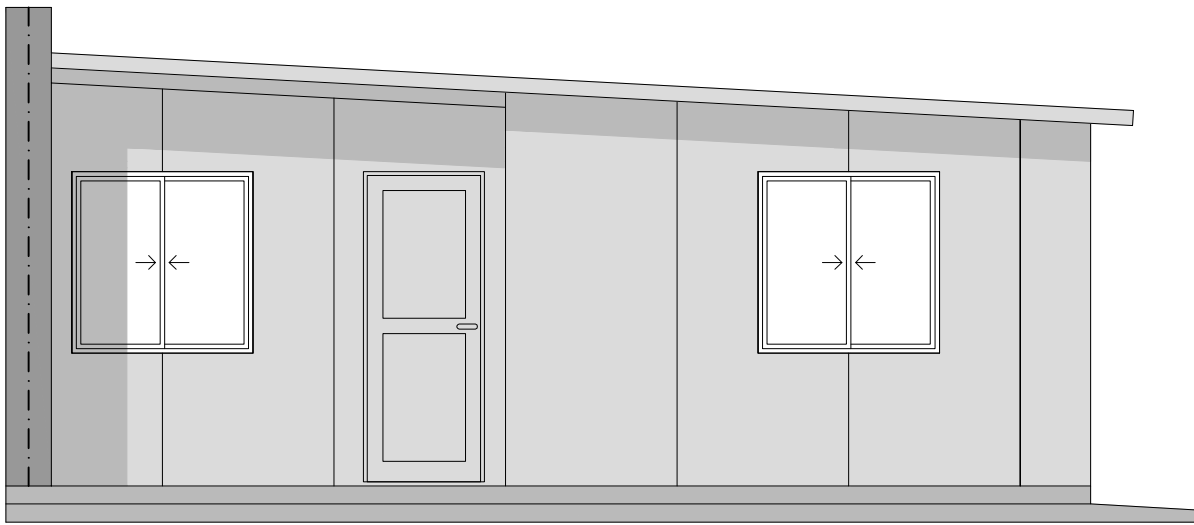
FACHADA PRINCIPAL
Esc. 1 / 50



CORTE LONGITUDINAL
Esc. 1 / 50



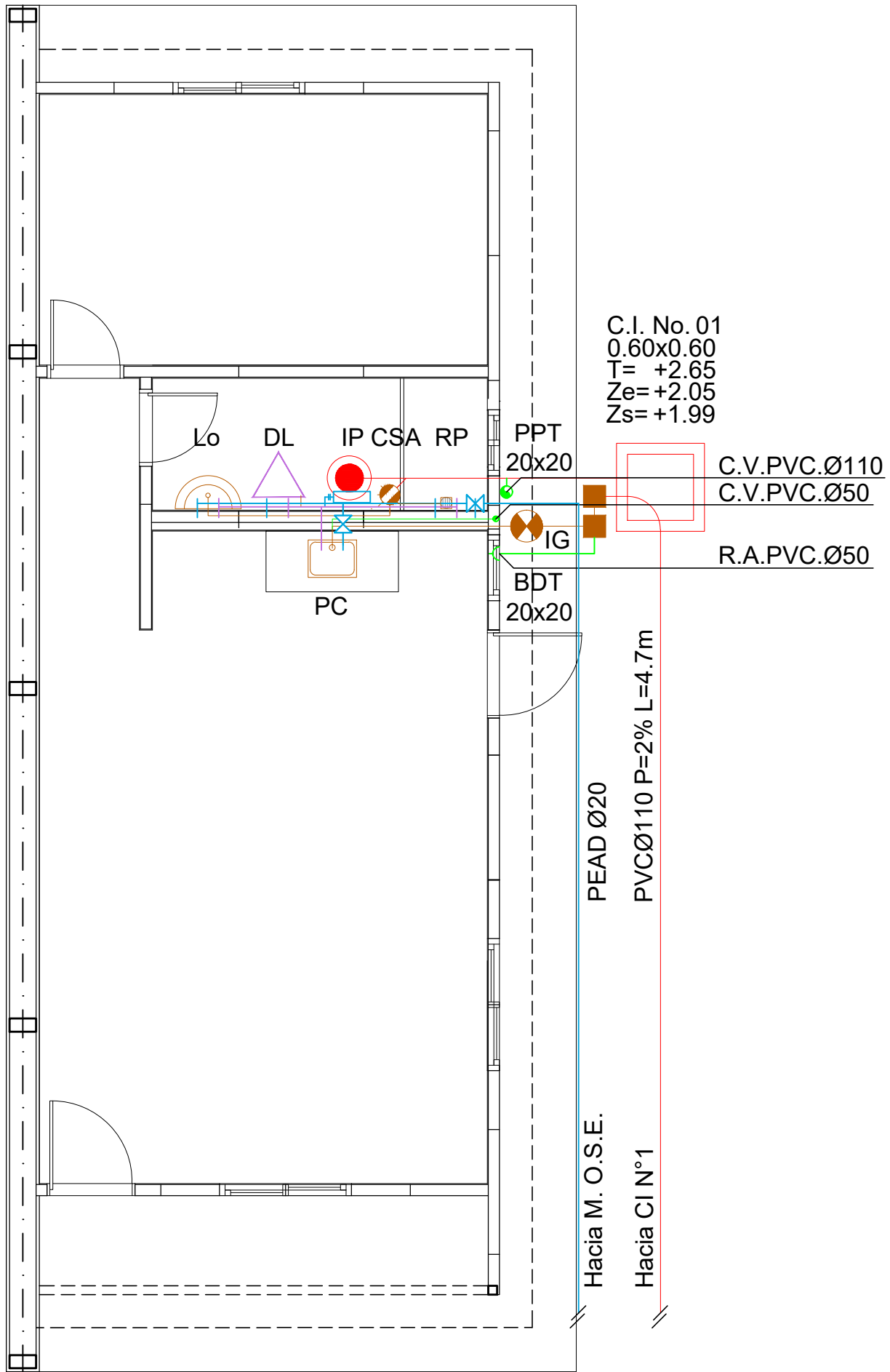
PLANTA ALBAÑILERÍA
Esc. 1 / 50



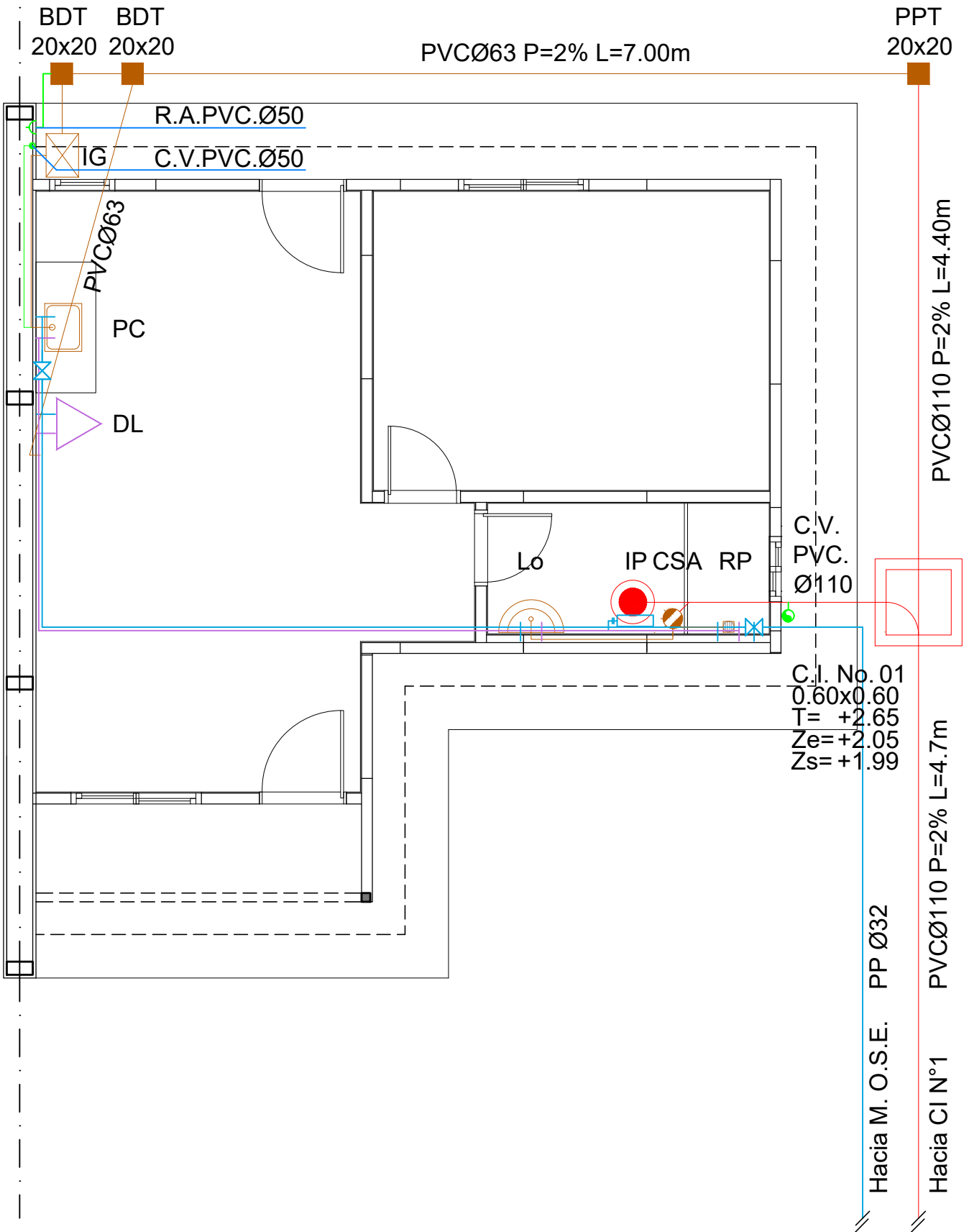
FACHADA PRINCIPAL
Esc. 1 / 50



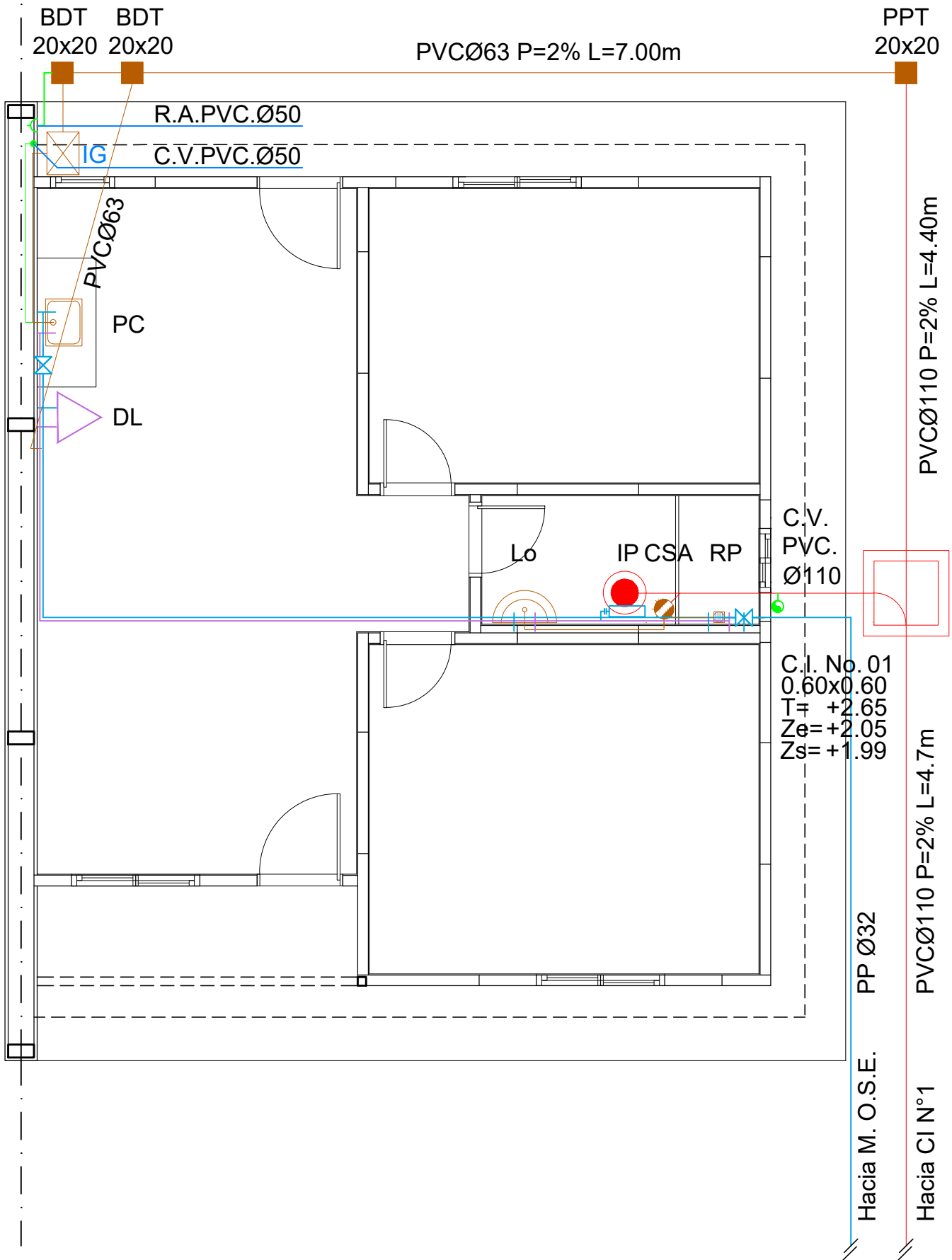
CORTE LONGITUDINAL
Esc. 1 / 50



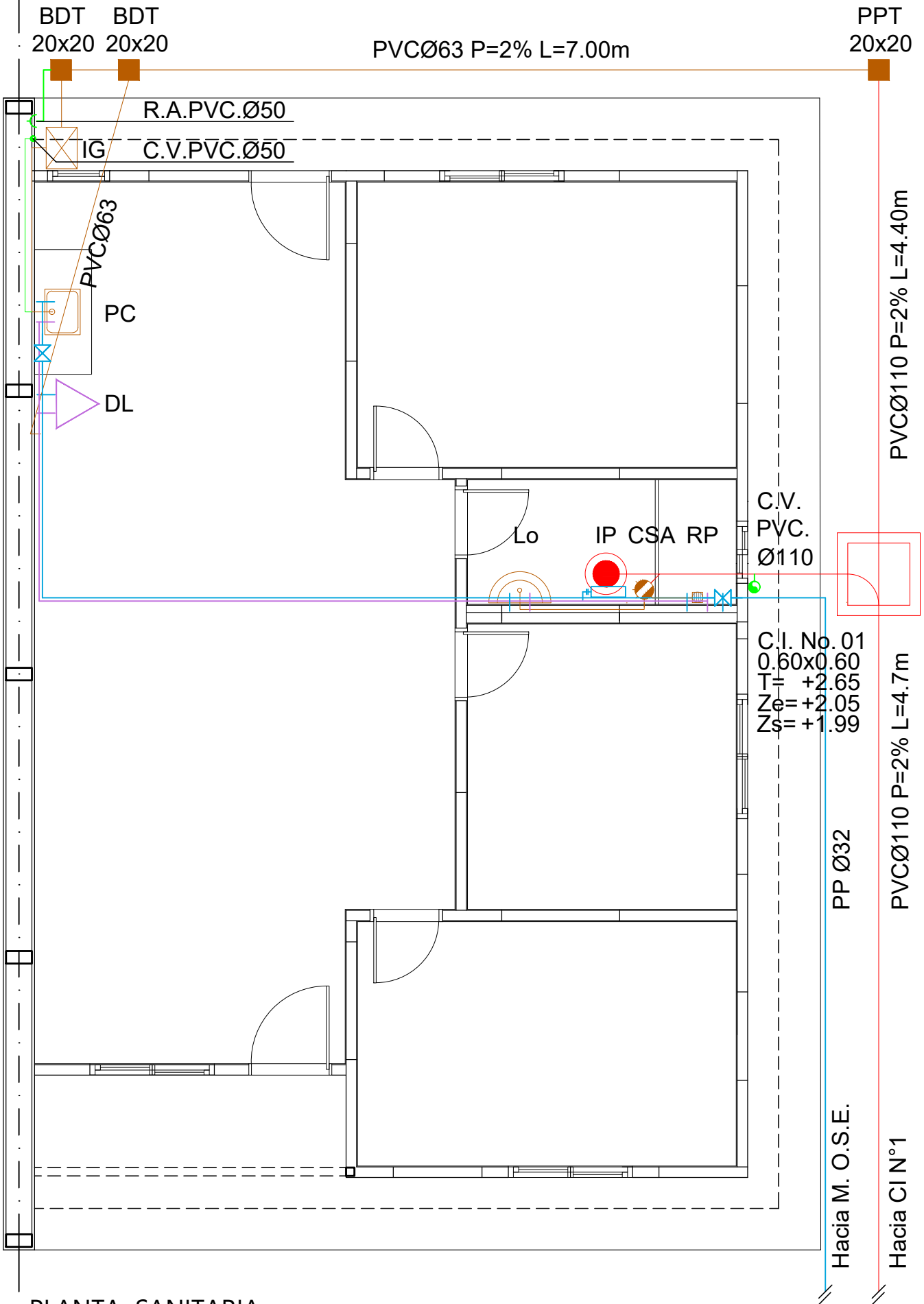
PLANTA SANITARIA
 Esc. 1 / 50



PLANTA SANITARIA
Esc. 1 / 50



PLANTA SANITARIA
Esc. 1 / 50



PLANTA SANITARIA
Esc. 1 / 50